

VALENCIA COUNTY COMPREHENSIVE PLAN



Community Meetings

March 23 and 24, 2021

AGENDA

- Introductions
- Scope/Purpose of a Comprehensive Plan
- Emerging Issues
- Question and Answer Session
- Break-out Discussion

WHAT IS A COMP PLAN?

- Policy guide that informs decisions about capital investments and land use
- Vision document for the future of Valencia County; established through a community-driven process
- Outline existing conditions, challenges, and opportunities
- Consider needs 20+ years into the future
- Strategies to achieve County goals and policy priorities
- Policy document rather than a regulatory document (different than the zoning code)

WHY IS A COMP PLAN IMPORTANT?

- Identify general infrastructure and facility needs
- Understand and anticipate changing demographics and economic conditions
- Reference document for staff, residents, and policy-makers when developing infrastructure projects and making land use decisions
- Qualify for grant funding; state recommends that a Comp Plan be updated every 5 years

GEOGRAPHIC SCOPE OF THE COMPREHENSIVE PLAN

- Focus is on unincorporated areas
- Incorporated communities have Comprehensive Plans and identify their own priorities
- Valencia County Comprehensive Plan will document services in incorporated areas that are available for all residents
- Many issues transcend boundaries – housing needs, economic development, recreational opportunities, transportation needs

CHAPTERS / COMPONENTS

- Community Profile / Demographics
- Economic Development
- Land Use
- Housing
- Community Services
- Transportation
- Utilities / Water Resources
- Natural Resources / Environment
(includes Hazards)

Structure of Individual Chapters

- Existing Conditions
- Community Priorities
- Policies and Action Items

COMMUNITY ASSETS

- Cultural/historical landmarks
- Rural heritage/atmosphere
- Farming greenbelt along the Rio Grande
- Railroad – BNSF and Rail Runner
- UNM-Valencia



WHAT DO WE KNOW? / WHAT HAVE WE HEARD SO FAR?

- High quality of life in Valencia County
- Combination of rural lifestyle and proximity to urban amenities
- Unincorporated areas where additional services are desired; other areas where rural land uses should be preserved
- Previous Comp Plan (2005) does not provide sufficient guidance on land use decisions
- Concerns over long-term water resource availability
- Tension: urban growth versus rural identity
- Balance the desire for economic opportunities with development patterns that are consistent with Valencia County

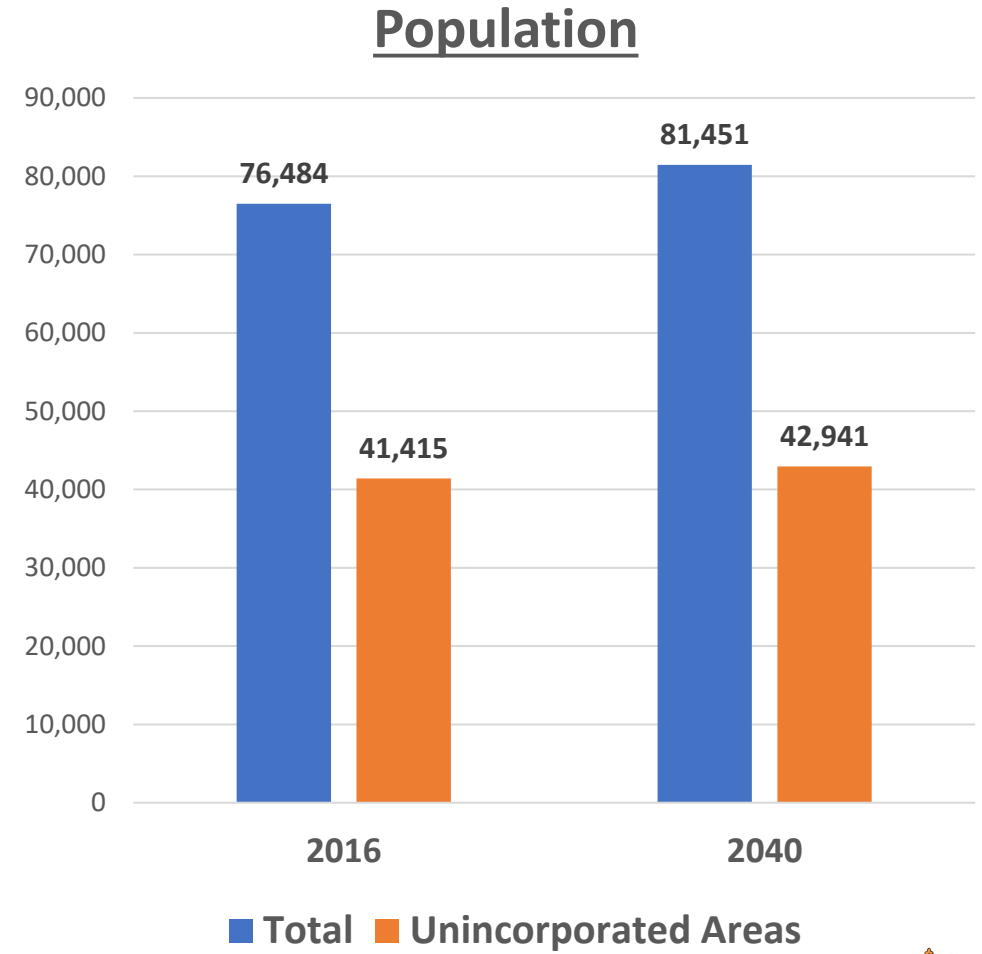
WHAT DO WE KNOW ?

GROWTH & DEVELOPMENT

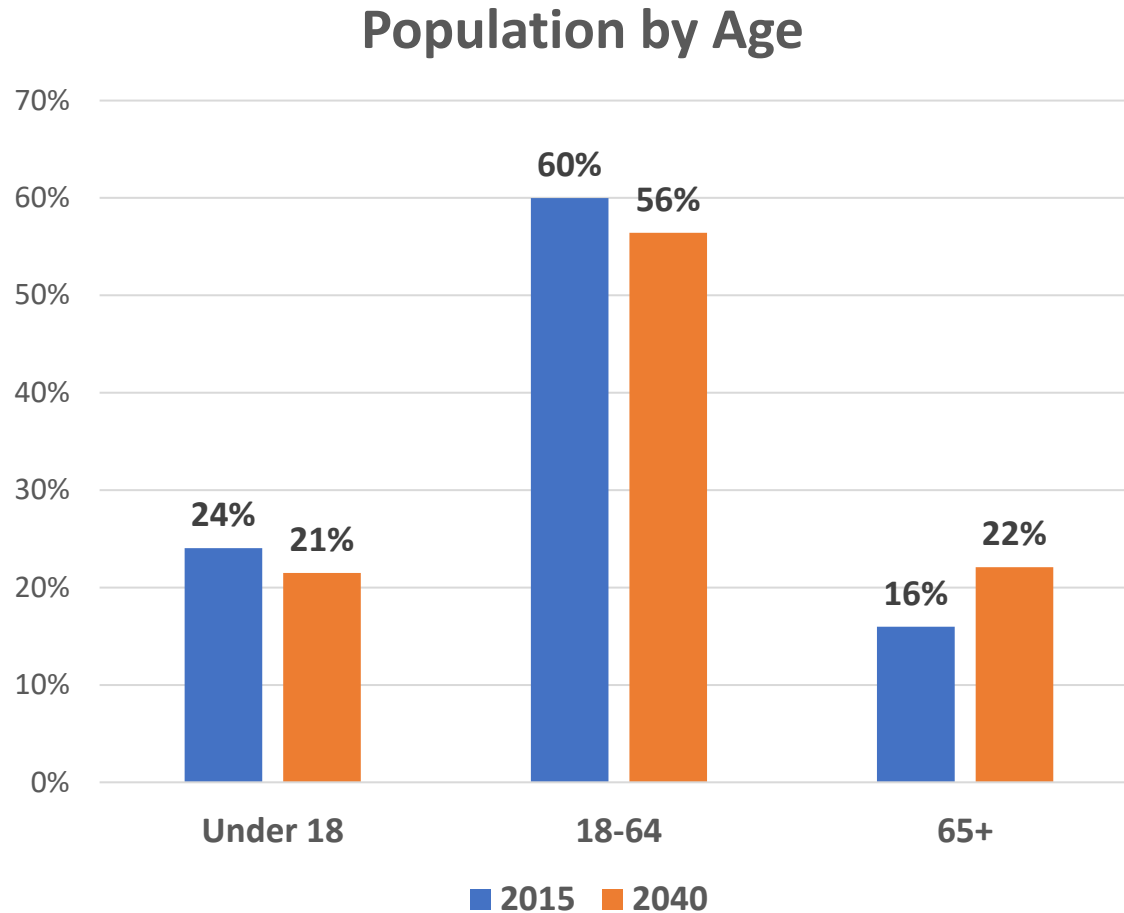
- Development in Los Lunas
 - New housing and commercial activity
 - Facebook and supporting businesses
- River crossing in design phase
 - Alleviate congestion on NM 6, improve access for Valencia County residents
 - Could open new land for development
 - Phase I: Connection between NM 314 & NM 47
 - Phase II: Interchange and connection from I-25 to NM 314

WHAT DO WE KNOW? – POPULATION DYNAMICS

- Modest growth at County level in last 5-10 years
- Recent increase in housing demand, especially in Los Lunas
- County forecast (MRCOG): 2016-2040
 - 4% total population growth
 - 5% total employment growth
 - Majority of growth is likely to occur in incorporated areas



WHAT DO WE KNOW? – POPULATION DYNAMICS

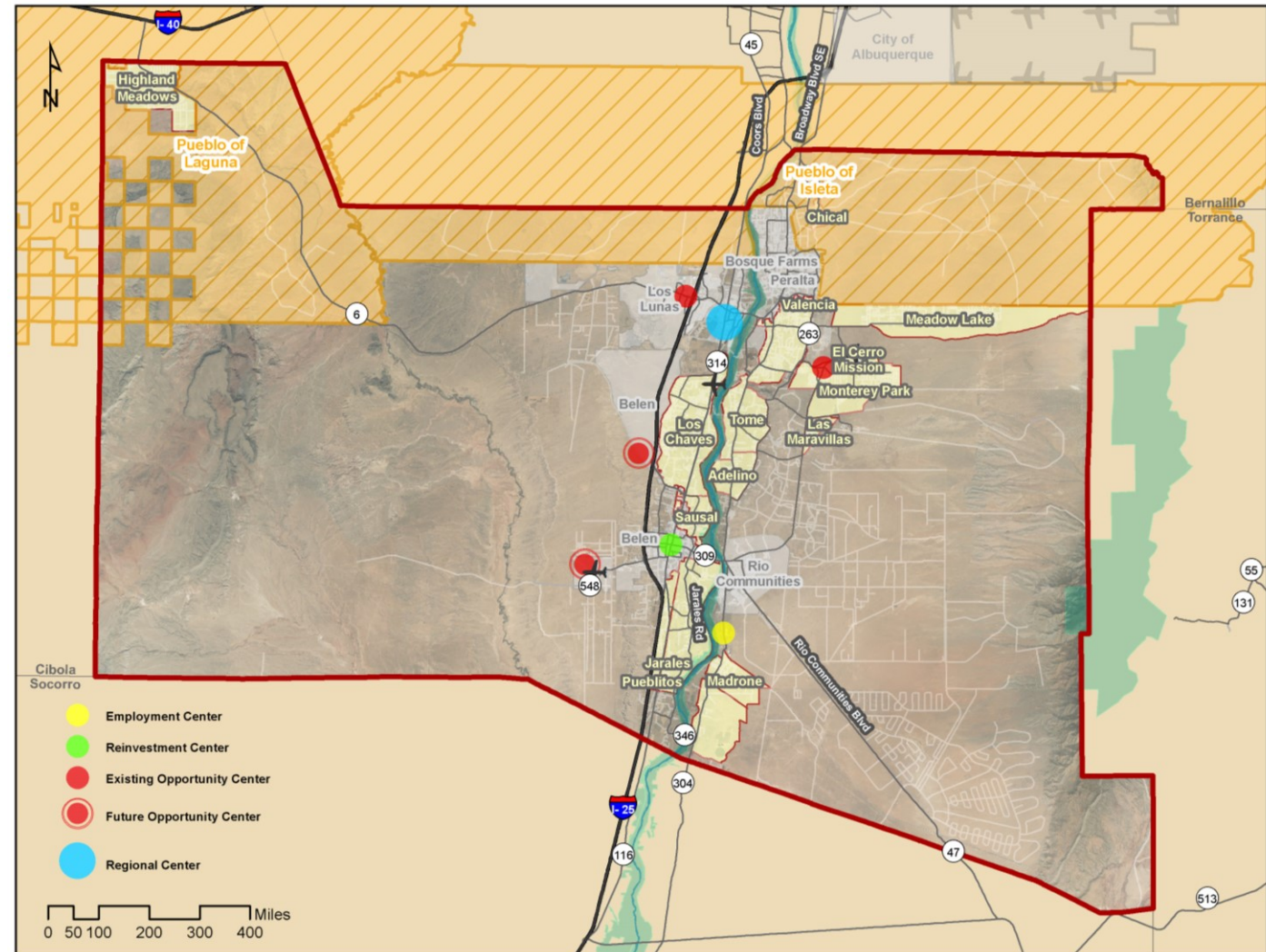


- Increasing share of the population will be over age 65
- Decreasing share of population will be under 18
- Fewer individuals to participate in the workforce (i.e. ages 18-64)
- Implications for senior services, school enrollment, travel patterns, etc.

WHAT DO WE KNOW?

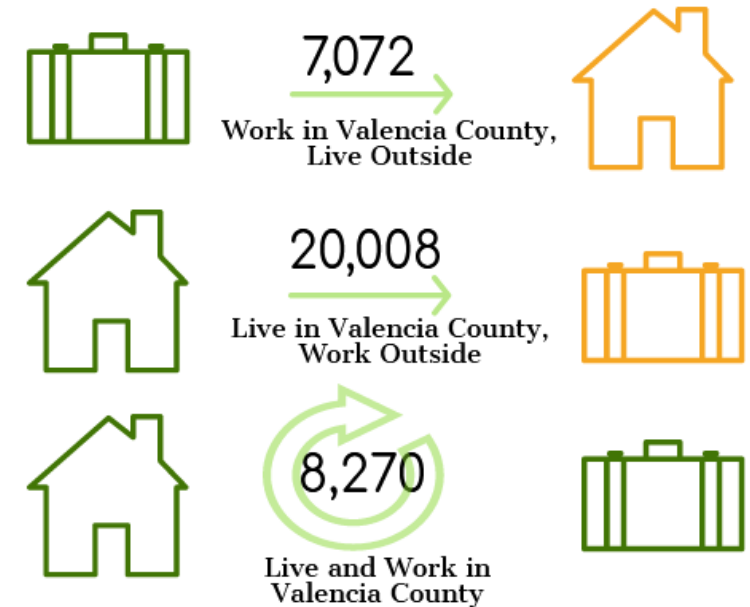
GROWTH & DEVELOPMENT

- Regional activity centers – Downtown Los Lunas and Belen
- Comp Plan will evaluate locations for future growth and development
 - Potential medical center
 - Manzano Expressway - El Cerro Mission Blvd to Meadowlake Rd
 - West of I-25



INITIAL COMMUNITY NEEDS AND PRIORITIES

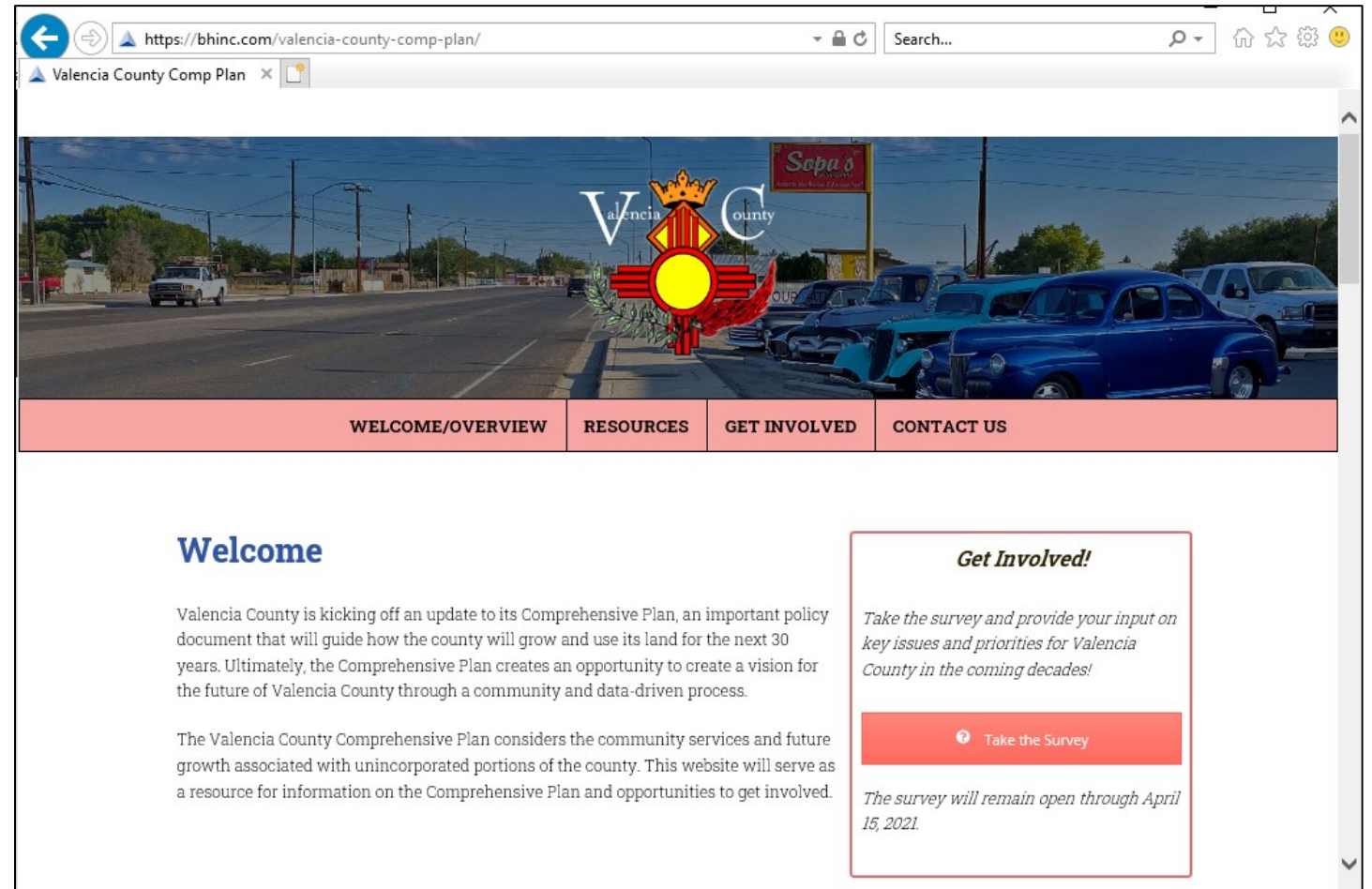
- Greater range of job opportunities (3/4 of employed residents commute outside the County for work)
- Medical services
- Community programs and recreational opportunities
- Roadway improvements
- Improved broadband access



OnTheMap, 2018

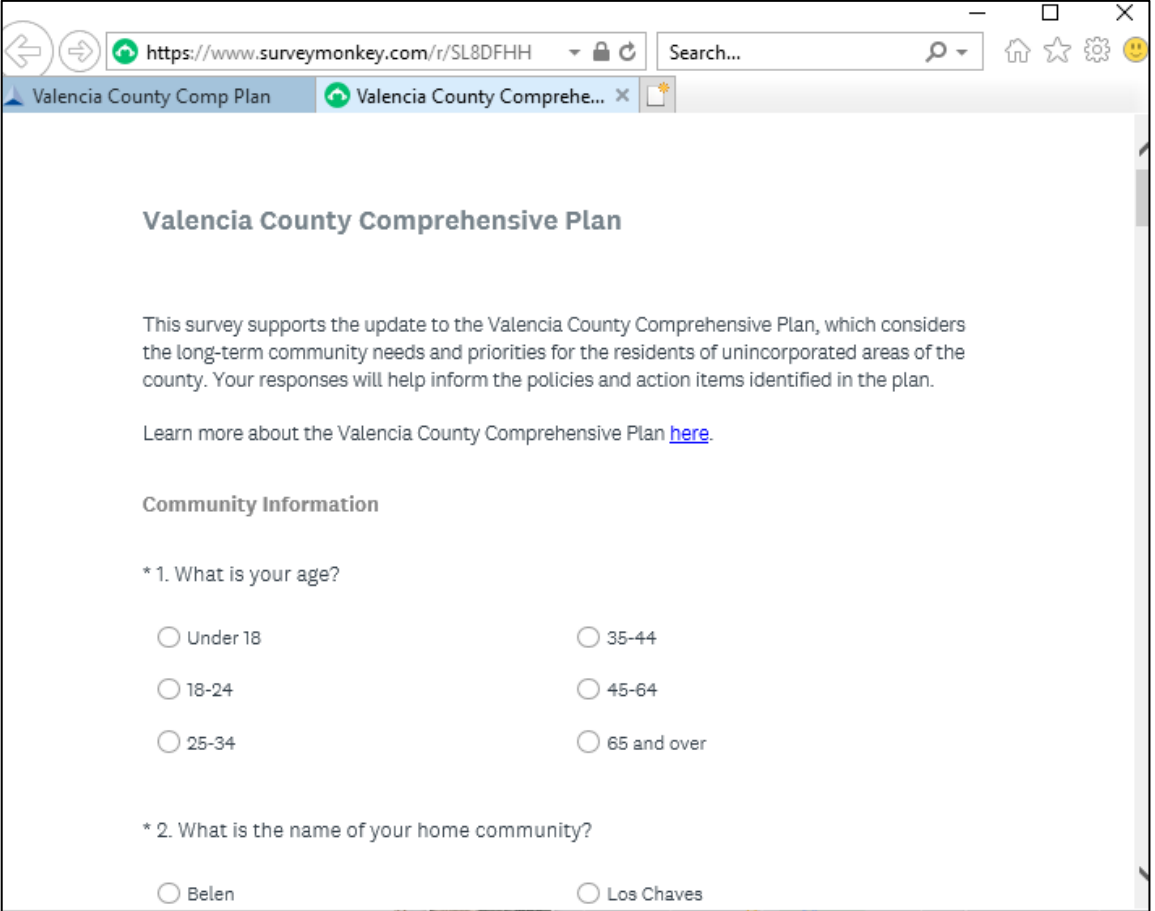
PROJECT WEBSITE

- Link now available on Valencia County website
- Resource hub for updates and Comp Plan materials
- <https://bhinc.com/valencia-county-comp-plan/>



PUBLIC OUTREACH SURVEY

- [Available](#) on project website through April 15
- Combination of multiple choice, ranked order, and open-ended questions
- Gain insights into public priorities and areas of concerns
- Results to be integrated into Comprehensive Plan



The screenshot shows a web browser window with the URL <https://www.surveymonkey.com/r/SL8DFHH>. The browser tabs show "Valencia County Comp Plan" and "Valencia County Comprehe...". The survey title is "Valencia County Comprehensive Plan". The introductory text states: "This survey supports the update to the Valencia County Comprehensive Plan, which considers the long-term community needs and priorities for the residents of unincorporated areas of the county. Your responses will help inform the policies and action items identified in the plan." A link is provided: "Learn more about the Valencia County Comprehensive Plan [here](#)." The section "Community Information" contains two questions: "* 1. What is your age?" with radio button options: "Under 18", "18-24", "25-34", "35-44", "45-64", and "65 and over"; and "* 2. What is the name of your home community?" with radio button options: "Belen" and "Los Chaves".

NEXT STEPS/OUTREACH EFFORTS

Public Outreach

- Project website
- Online survey – Open through April 15
- Virtual workshops
- Additional public outreach in **late summer 2021**

Plan Development

- Draft available for public review in **late summer**
- Final draft to be considered for approval by County Commission in **fall 2021**

BREAKOUT SESSION – DISCUSSION QUESTIONS

- What are the best parts about living/working in Valencia County?
- What are one or two things you would most like to change?
- What are you most concerned about?

QUESTIONS

Nancy Gonzales – Community Development Director
nancy.gonzales@co.valencia.nm.us

Gabriel Luna – Land Use Planner
gabriel.luna@co.valencia.nm.us

Aaron Sussman, AICP – Project Manager
asussman@bhinc.com