

Engineering Technologies

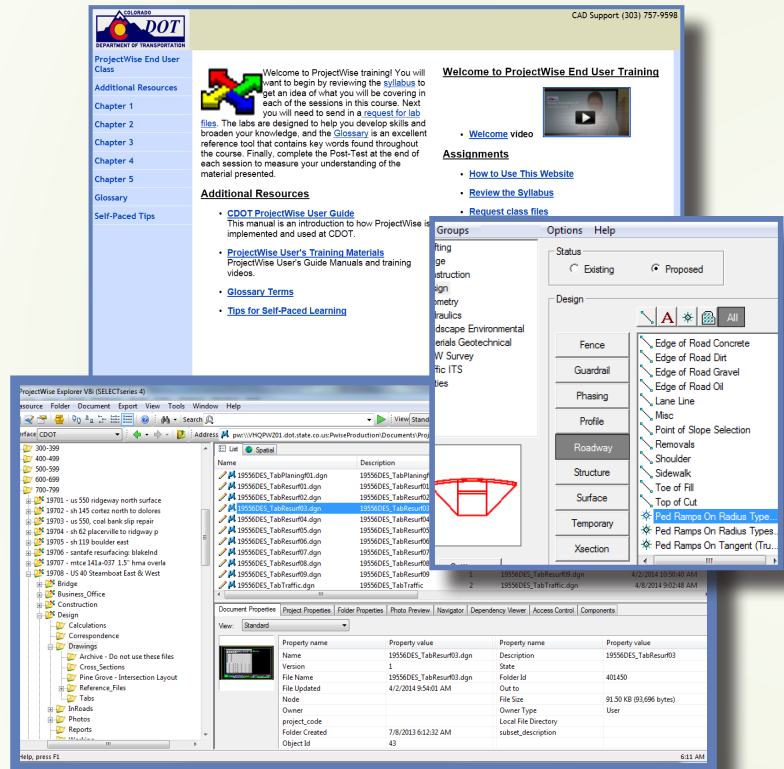


Bohannon  Huston

- ▲ CADD Consulting and Custom Solutions
 - ▲ Engineering Content Management
 - ▲ Productivity Enhancements
 - ▲ Custom Development
 - ▲ Training and Support
 - ▲ Process Mapping
- 

Leaders in Creative Solutions

Bohannon Huston, Inc., (BHI) is a full-service firm that combines advanced technology, spatial data, and engineering expertise. Our real-world experience pursuing process improvements gives us an inside perspective on the issues you face and how to surmount them. We can provide custom programming solutions, develop specialized training, or create a website to support your business. Our staff experts can help your organization align engineering processes with business goals, giving you a longer term perspective on objectives, strategies, and achievements, including return on investment.



Engineering Technologies

Training and Support

Custom Courseware — Provides a training environment that is tailored to your configuration specifications, using projects you supply for specific lab exercises.

Whether you need custom training in CADD software, advanced courses in CADD, or help evaluating and improving your processes, we have experts to help you meet your objectives.

CADD Consulting and Custom Solutions

CADD Portal — Provides hyper-linked cross references to drafting standards, design standards, workflow standards, and training documentation.

CADD Configuration —

Allows customization of the CADD environment for optimal engineering design within your organization. Supports CADD software and upgrades.

Custom Software — Our experienced and certified software engineers can provide customizations designed to streamline and enhance your processes and provide software to fill gaps in your workflows.

Web Development

Our professional web developers can design and develop an engineering support portal based on your work breakdown structure.

Engineering Content Management

Whether you are new to the emerging technology related to managing electronic engineering data or you are concerned about preserving legacy data, we can assist you in maximizing your return on investment (ROI) and leveraging the efforts that are put into creating and maintaining your engineering data to achieve both short- and long-term objectives.

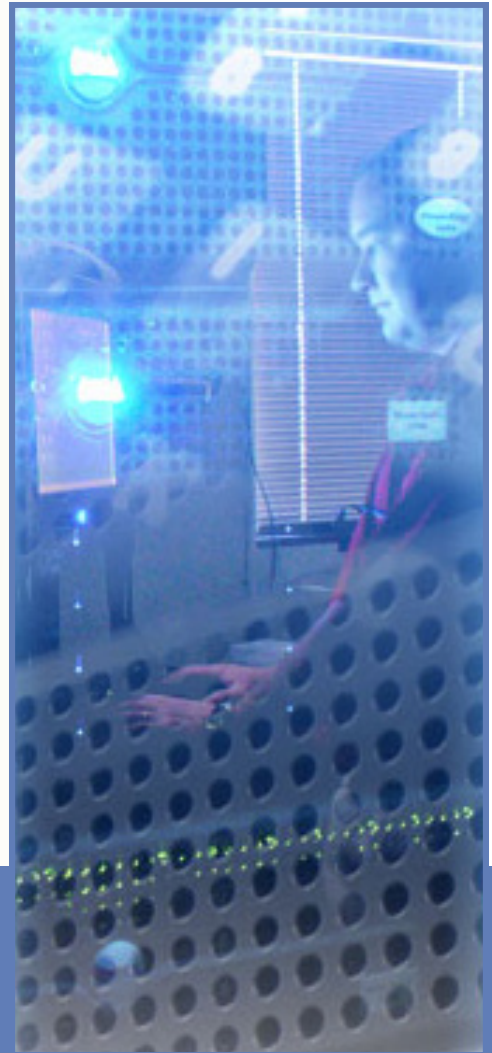
Process Assessments

Applying industry best practices, we can provide process improvement recommendations that work for your organization. Our own experience as an engineering firm pursuing process improvements gives us an inside perspective on the issues that arise and how to surmount them.

Multi-Year Planning

To help your organization align its engineering processes with its business goals, we can develop a solution that combines technology, business, and engineering knowledge to give you a longer-term perspective on goals, strategies, and achievements, including ROI.

BHI provides custom solutions including specialized software and CADD environment customization.



CDOT — CADD Engineering Systems Management (CESM)

By building on CDOT's current software, configuration, workflows, and training programs, expanding the utilization of ProjectWise, and integrating ProjectWise with the CDOT systems including SAP, ESRI GIS system, and Microsoft SharePoint, BHI is assisting CDOT on its quest to create a complete electronic project delivery system – from planning through construction. During the past eight years, BHI has created and enhanced the CDOT design and survey configuration, has completed 145 training classes (representing over 3,000 hours of training and covering 13 wide ranging topics), and has produced six comprehensive training manuals, over 75 workflows, and 35 web-based training videos. BHI staff provides essential on-site support for the CESM program including CADD support and ProjectWise system management. The BHI team has a thorough understanding of the CDOT ProjectWise implementation and the custom configuration that has been developed to automate CDOT workflows. By working closely with CDOT management and the Specialty Groups throughout CDOT, BHI has helped CDOT create a ProjectWise environment that meets the varying needs for document management throughout CDOT.



NMDOT CADD and IT Training

BHI provided custom workflow documentation and training for an upgrade of NMDOT's roadway design software, InRoads from Bentley Systems, Inc. Custom workflow manuals covered CADD basics, drainage, and roadway design. BHI also provided customized two- to four-day classes for beginner, intermediate, and advanced users.

Who We Are...

The Engineering Technologies group at BHI is dedicated to providing exceptional consulting services for products essential to the civil engineering environment. The group's core competencies are in transportation design, and our team includes professional engineers, project management professionals, and former Department of Transportation (DOT) employees with a total of 35 years of experience at four different state DOTs. Our team has experience with numerous state DOTs, including Colorado, New Mexico, Utah, and Oklahoma. As a result, we often assist DOT clients with a wide variety of tasks, ranging from requirements specifications to major software transitions between platforms.



Albuquerque



Denver



Las Cruces

Benefits of Our Services:

- Engineers can focus on design — not drafting — so that they can analyze more design options
- Enhanced data management
- Enhanced productivity
- Mapped processes
- Metrics — staff members know how and what to measure for the highest return on investment
- Standards throughout the organization
- More efficient workflows for streamlined processes
- Staff that is adequately trained, confident, and prepared

In New Mexico:

Leslie L. Small
Senior Vice President
lsmall@bhinc.com

7500 Jefferson Street, NE
Courtyard I
Albuquerque, NM 87109
505.823.1000

In Colorado:

Denise Aten, AICP
Vice President
daten@bhinc.com

Meridian One
9785 Maroon Circle, Suite 140
Englewood, CO 80112
303.799.5103

Bohannon  Huston

www.bhinc.com

Albuquerque • Denver • Las Cruces

